

LSUA

General situation in Latvia in district heating sector. Future challenges and opportunities for district heating operation.



President of LDHA
Ina Bērziņa-Veita

Latvia District Heating association



*LDHA Goal -
Development of
sustainable district
heating in Latvia*

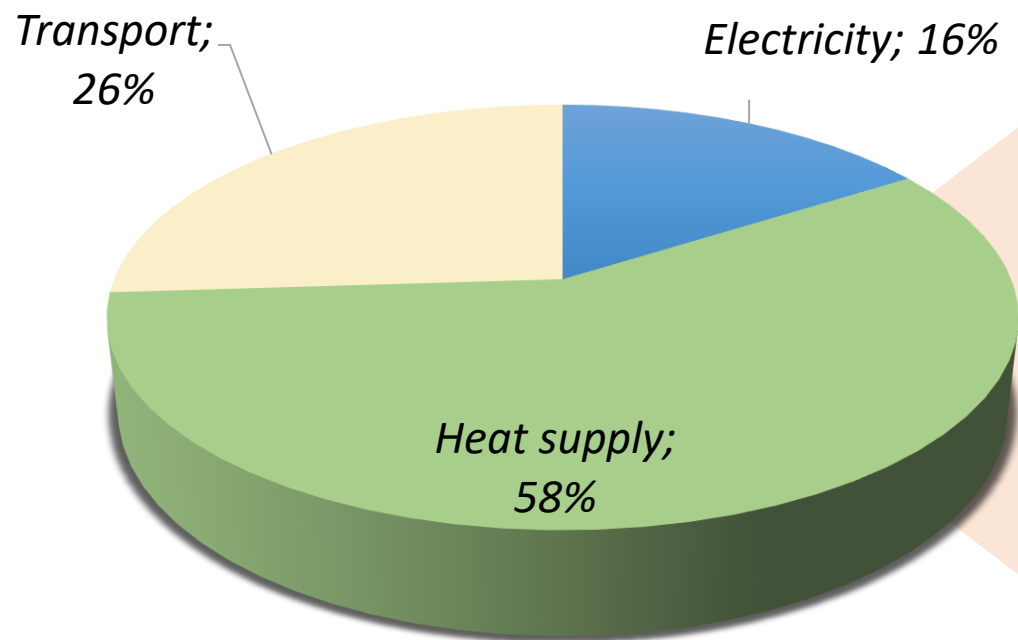


*LDHA
95 % from
industry*

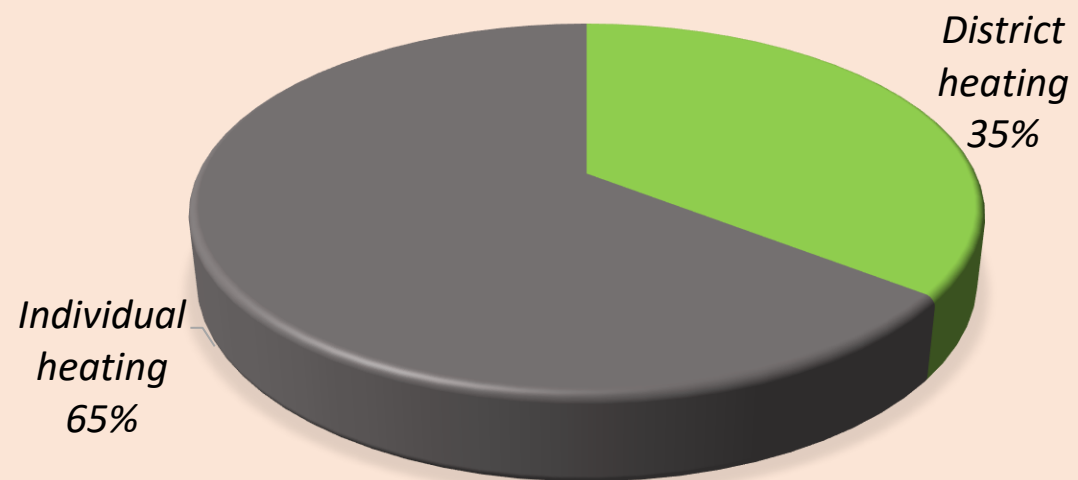


- *heating companies;*
- *heating equipment manufacturers;*
- *installation companies,*

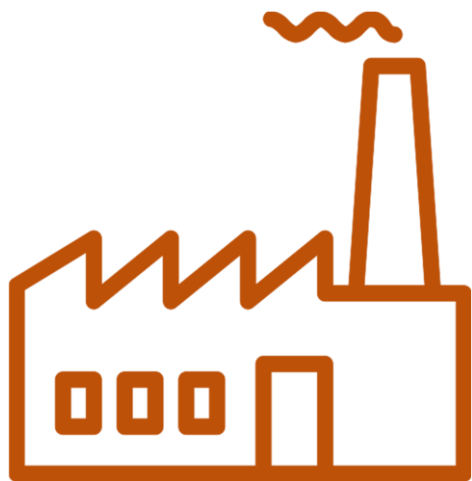
Primary energy consumption in Latvia



Heat supply



District heating system in Latvia



Heat plants

Total **633**

320

Small heat plants ($0.2 < P \leq 1$ MW)

311

Medium heat plants ($1 < P \leq 50$ MW)

2

Large heat plants (> 50 MW)



Combined heat and power plants (CHP)

Total **175**

117

Small CHP ($0.2 < P \leq 1$ MW)

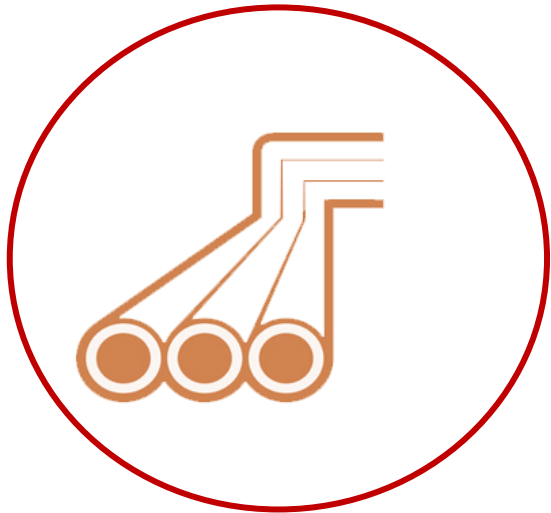
54

Medium CHP ($1 < P \leq 20$ MW)

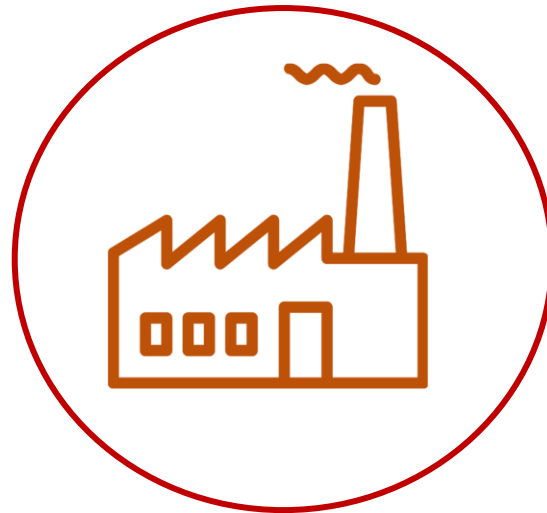
4

Large CHP (> 20 MW)

District heating system in Latvia



*Heat network length
~**2000 km**
Relative heat loss
11.8%*

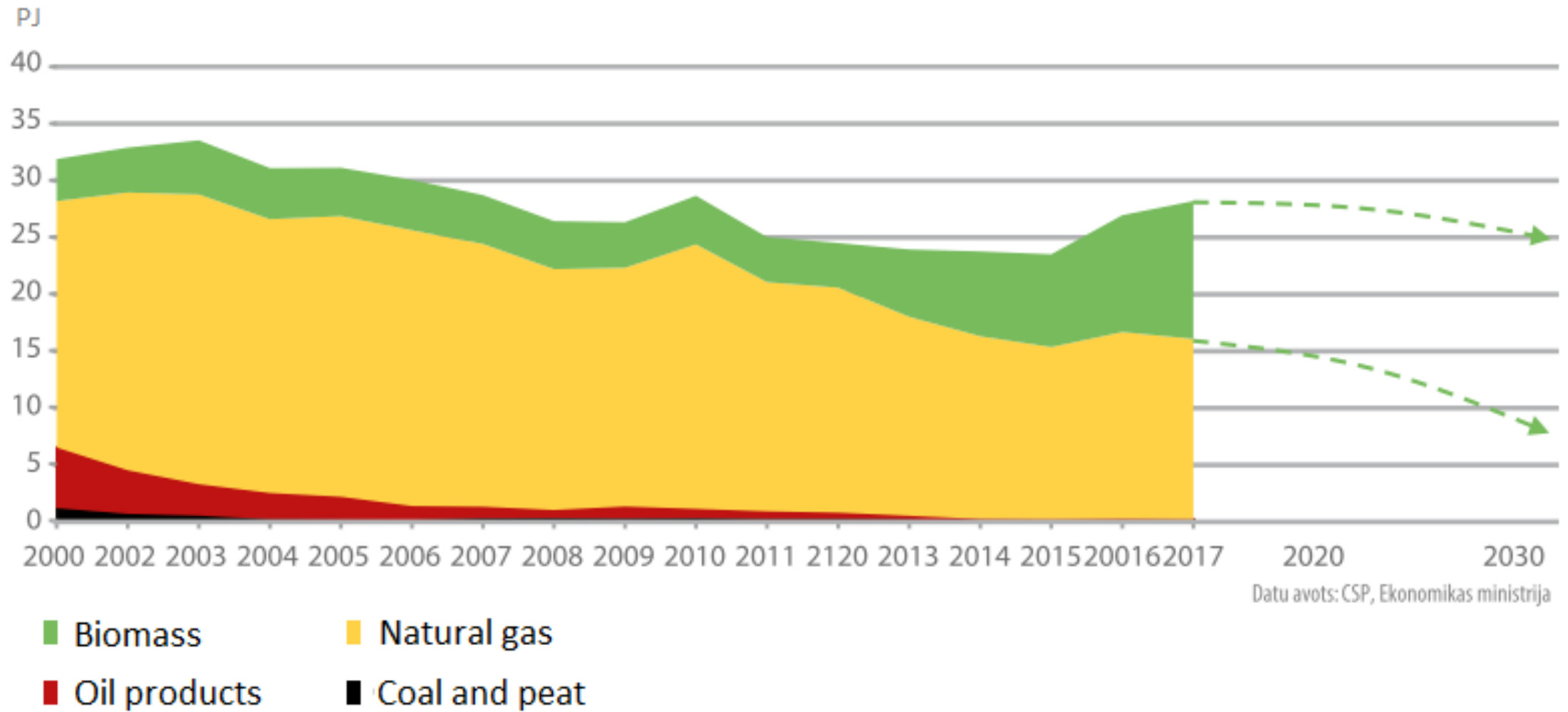


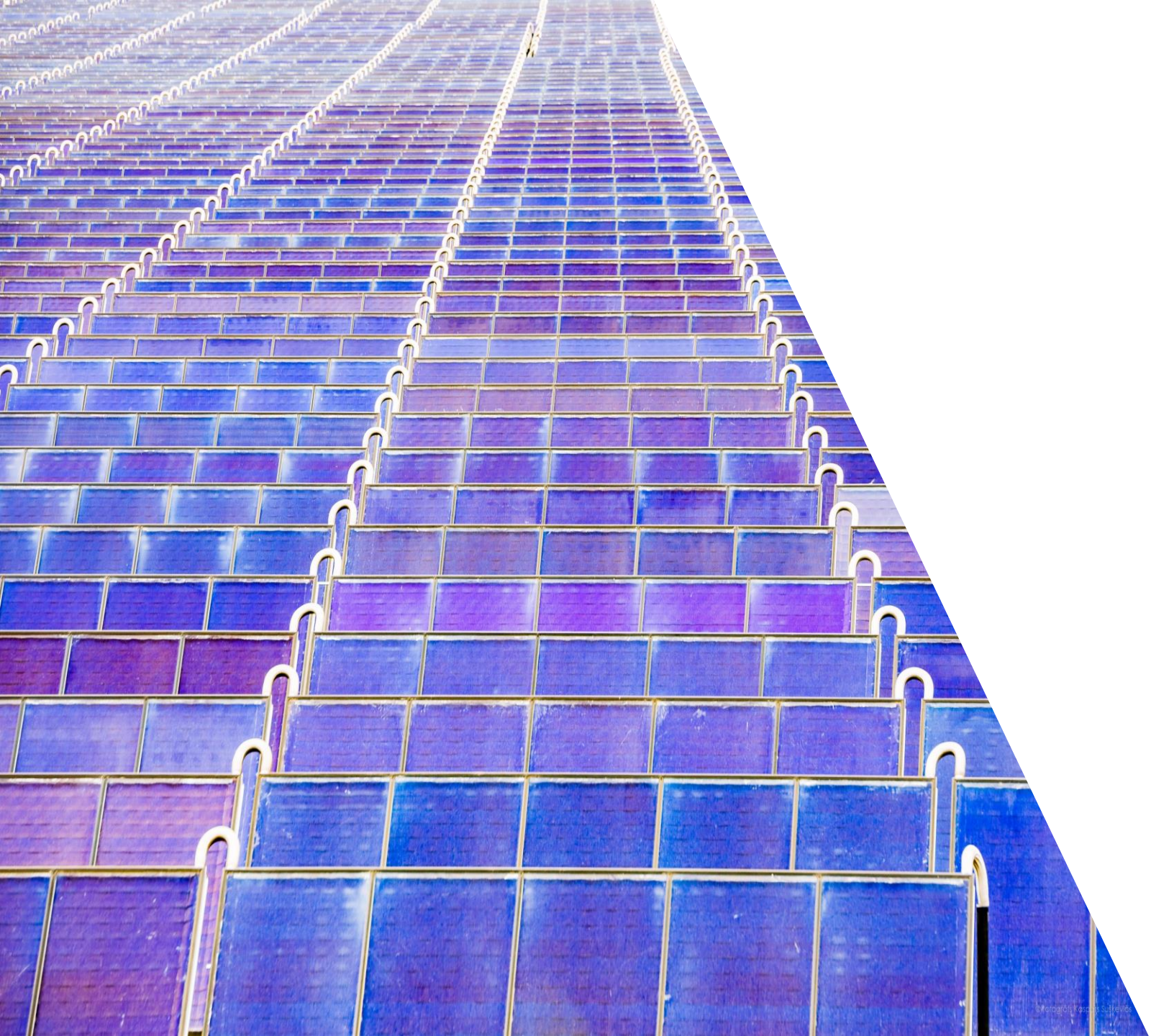
*Heat plant installed
heat capacity
2094.9 MW*



*Produced heat **7947,9 GWh**
Heat plants **2564,9 GWh**
CHP **5383 GWh***

District heating system in Latvia





Opportunities



Infrastructure expansion



Attracting decentralized customers

Development directions in district heating



Digitization



Sustainable energy resources

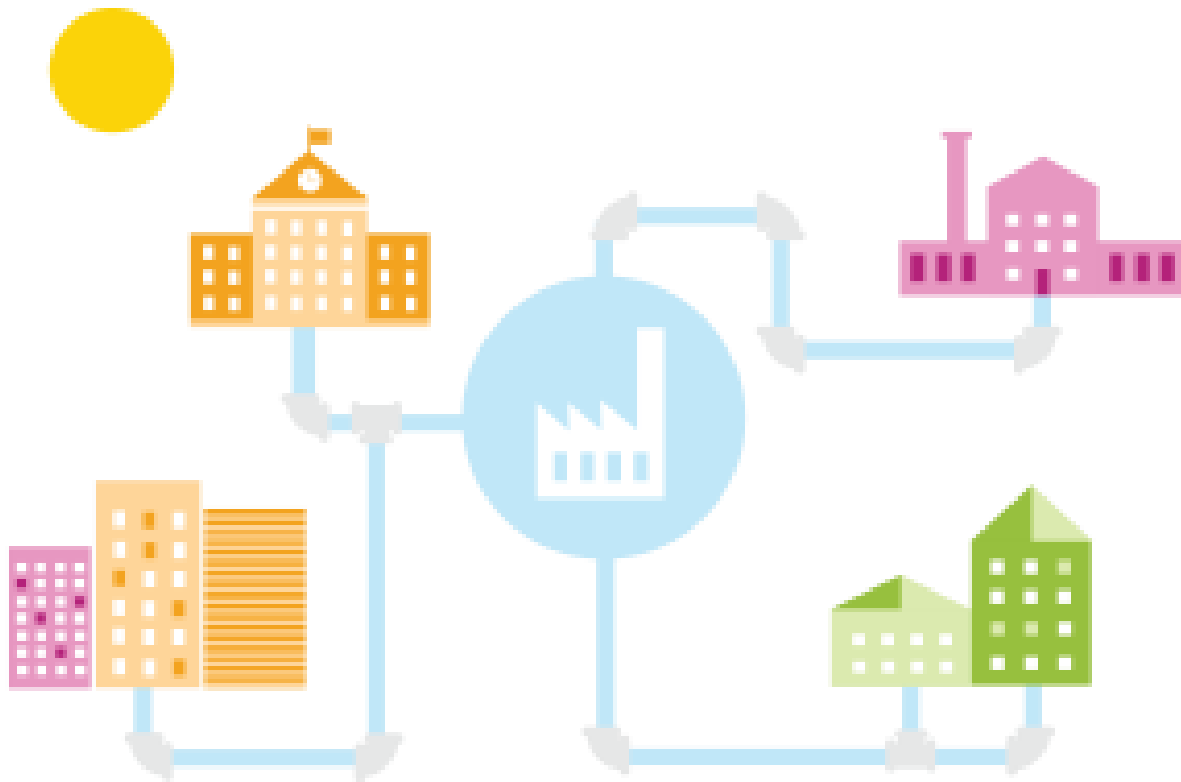


Industry synergies



Accumulation

DHS the most effective solution in densely populated areas



Primary energy consumption decreases

Reduced emissions

Total share of RES increasing

Higher level of comfort (service)

High potential for use zero emission technology

Accumulation

Solar collectors

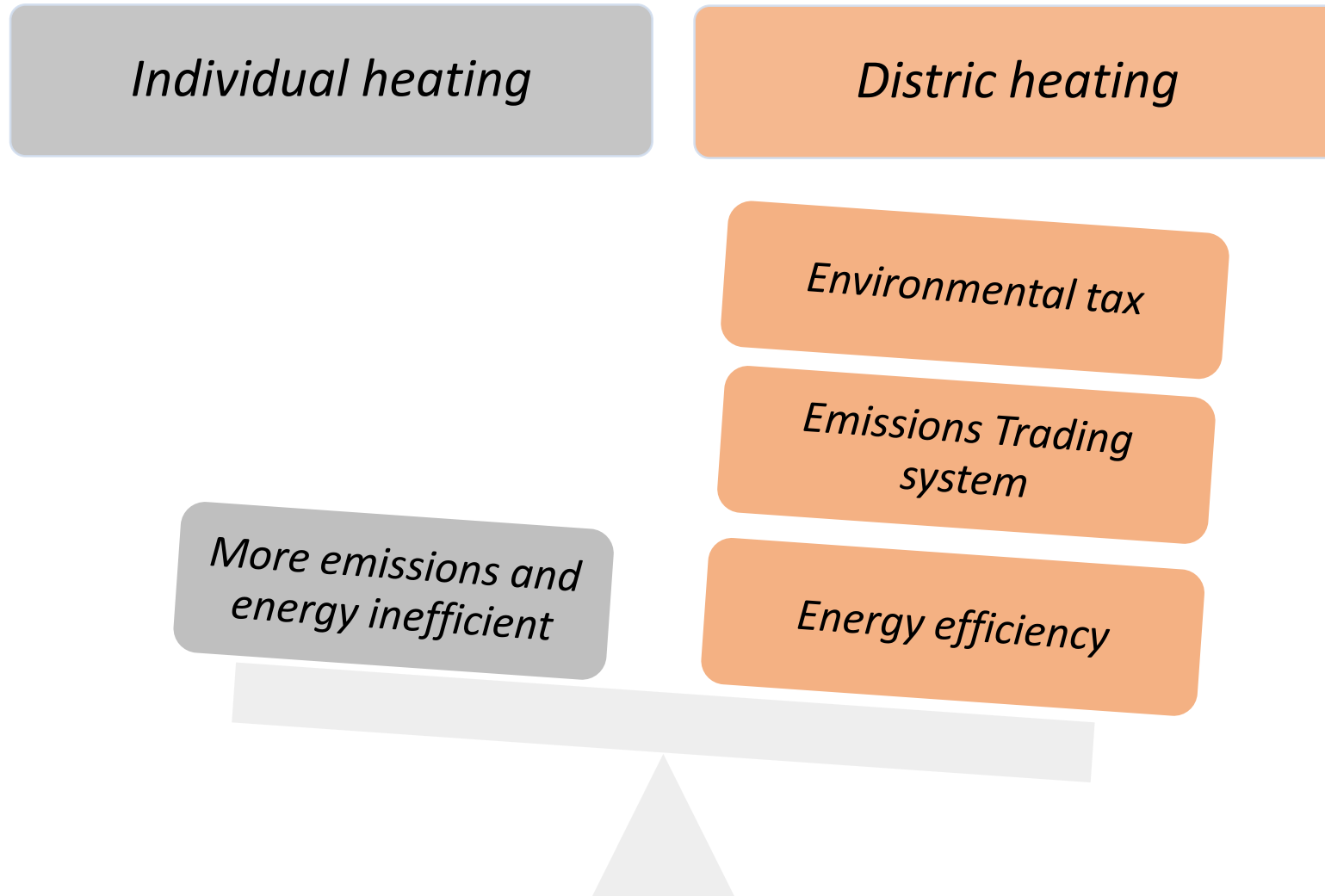
Heat pumps

«Waste heat»



Challenges

Regulations individual vs distric heating



Conclusions about DHS in Latvia:

- Developed and efficient infrastructure
- Possibility to expand in densely populated areas;
- Larger systems - lower tariffs;
- Opportunity for innovative technologies (waste heat, etc.) and synergies;
- Easier to control, list and regulate;



Kontakti

Biedrība Latvijas siltumuzņēmumu asociācija

Kandavas iela 16 Rīga, LV-1083

t. 67605706

e-pasts: lsua@lf.lv